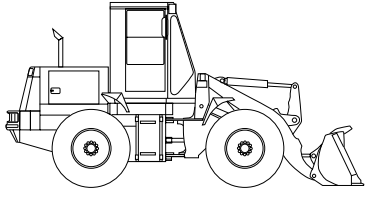
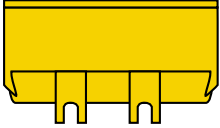
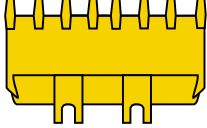
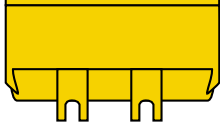


60Z^{IV}-2 BUCKET DATA

			General Purpose		Material Handling
			With Bolt-on Cutting Edge	With Teeth	With Bolt-on Cutting Edge
					
Capacity	Heaped	yd ³ (m ³)	2.1 (1.6)	2.0 (1.5)	2.4 (1.8)
	Struck	yd ³ (m ³)	1.8 (1.4)	1.7 (1.3)	2.0 (1.5)
Maximum dumping clearance		ft-in (mm)	8'7 ⁷ / ₈ " (2640)	8'7 ⁷ / ₈ " (2555)	8'4 ¹ / ₂ " (2585)
Dumping reach (to front of bucket edge or tooth)		ft-in (mm)	3'6 ¹ / ₂ " (1085)	3'8 ⁵ / ₈ " (1135)	3'8 ¹ / ₄ " (1125)
Bucket hinge pin height		ft-in (mm)	11'4 ¹ / ₈ " (3460)	11'4 ¹ / ₈ " (3460)	11'4 ¹ / ₈ " (3460)
Digging depth		ft-in (mm)	4 ¹ / ₈ " (105)	4 ⁵ / ₈ " (120)	4 ¹ / ₈ " (105)
Breakout force		lb (kg)	17,600 (8000)	19,000 (8600)	16,300 (7400)
Bucket tilt-back angle	at ground level		42°	42°	42°
	at carry position		51°	51°	51°
Overall	Length	ft-in (mm)	21'5 ⁹ / ₁₆ " (6540)	21'6" (6555)	21'4 ⁷ / ₈ " (6525)
	Height	ft-in (mm)	10'1 ¹ / ₂ " (3085)	10'1 ¹ / ₂ " (3085)	10'1 ¹ / ₂ " (3085)
Width (outside tire)		ft-in (mm)	7'5" (2260)	7'5" (2260)	7'5" (2260)
Width (outside bucket)		ft-in (mm)	8'1 ¹ / ₂ " (2450)	8'1 ¹ / ₂ " (2450)	8'1 ¹ / ₂ " (2450)
Wheel base		ft-in (mm)	8'8 ³ / ₈ " (2650)	8'8 ³ / ₈ " (2650)	8'8 ³ / ₈ " (2650)
Minimum turning radius	at outside bucket	ft-in (mm)	17'6" (5335)	17'7 ¹ / ₄ " (5365)	17'6 ⁷ / ₈ " (5355)
	at center of outside tire	ft-in (mm)	15'2 ³ / ₄ " (4640)	14'11 ⁷ / ₈ " (4570)	14'11 ⁷ / ₈ " (4570)
Minimum ground clearance		ft-in (mm)	1'2 ³ / ₄ " (375)	1'2 ³ / ₄ " (375)	1'2 ³ / ₄ " (375)
Full articulation angle		degree	40°	40°	40°
Operating weight (with ROPS Cab)		lb (kg)	19,045 (8638)	18,725 (8488)	18,855 (8548)
Static tipping load (with ROPS Cab)	Straight	lb (kg)	16,016 (7265)	16,330 (7405)	16,170 (7335)
	Full turn	lb (kg)	13,774 (6248)	14,010 (6358)	13,860 (5838)

Measured in accordance with SAE J732C & J742

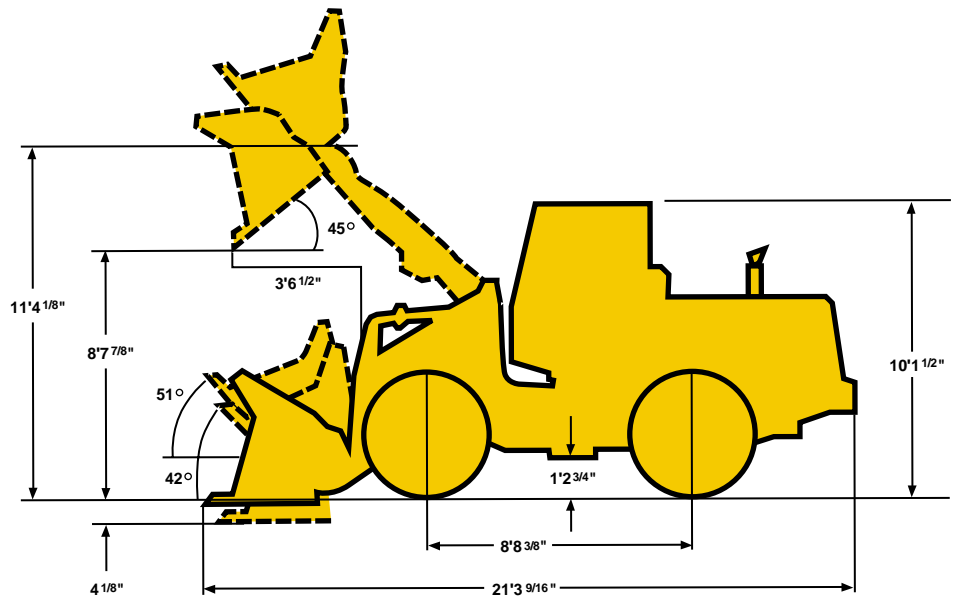
Materials and specifications are subject to change without notice and without obligation on the part of the manufacturer. The specifications supplied, while believed to be completely reliable, are not to be taken as warranty for which we assume legal responsibility.

60Z^{IV}-2 OPERATING SPECIFICATIONS

WEIGHTS AND DIMENSIONS (SUPPLEMENTAL DATA)

		Operating Weight	Tipping Load			Overall Width (Outside Tire)	Vertical Dimensions	Overall Length
			Straight	Full Turn				
ROPS Canopy (Instead of ROPS Cab)	lb (kg)	-530 (-240)	-490 (-220)	-420 (-190)	in (mm)		-2" (-50)	
Remove ROPS Canopy and Cab (for transport only)	lb (kg)	-995 (-450)	-895 (-405)	-785 (-355)	in (mm)		-14" (-355)	
Counterweight (Deduct) (Instead of rear tire ballast)	lb (kg)	-615 (-278)	-1180 (-535)	-1010 (-458)	in (mm)			+2" (+50)
Tires:								
17.5-25-12PR (L-2), (L-3)	lb (kg)	+200 (+90)	+130 (+60)	+110 (+50)	in (mm)	+1 ¹ / ₈ " (+30)	+1 ¹ / ₈ " (+30)	-1 ¹ / ₈ " (-30)
15.5-25-12PR (L-2), (L-3) with 75% CaCl	lb (kg)	+925 (+420)	+1190 (+540)	+1045 (+475)	in (mm)			
17.5-25-12PR (L-2), (L-3) with 75% CaCl	lb (kg)	+1410 (+640)	+1810 (+820)	+1600 (+730)	in (mm)	+1 ¹ / ₈ " (+30)	+1 ¹ / ₈ " (+30)	-1 ¹ / ₈ " (-30)
Air conditioner	lb (kg)	+150 (+70)	+130 (+60)	+110 (+50)	in			
Belly Guard (rear frame)	lb (kg)	+90 (+40)	+75 (+35)	+65 (+30)	in			

Tread 6'1¹/₄" (1860mm)
 Width (outside tire) 7'5" (2260mm)
 Width (outside bucket) 8'1¹/₂" (2450mm)
 Equipped with GSC bucket 2.1 yd³ with bolt on cutting edge
 15.5-25-12PR (L-2) Tire and ROPS Cab



The weight and load figure include Enclosed ROPS Cab. 15.5-25-12PR (L-2) tires. Full fuel tank and operator, optional counterweight.

60Z^{IV}-2 OPERATING SPECIFICATIONS

ENGINE

Make/Model/Fuel Type	Cummins/B5.9-C/Diesel
Type	4-cycle, watercooled, direct injection
Net flywheel horsepower	109HP/2400 RPM
Torque	325 ft. lbs./1600 RPM
Number of cylinders	6
Bore and stroke	4.02" x 4.72" (102mm x 120mm)
Total displacement	359 in ³ (5883 cm ³)
Alternator	DC24V-1200w (50amp)
Starting motor	24V-4.5kw (6HP)
Battery	12V-65AH, 2 units
Governor	All-speed, mechanical type

TORQUE CONVERTER AND TRANSMISSION

Torque converter	3 elements, single stage
Torque stall ratio	3.02:1
Main clutches	Wet hydraulic, multi-disc type
Cooling method	Forced circulation type
Transmission	Full power shift, 3 forward, 3 reverse
Forward & reverse (maximum speed)	1st: 4.8 MPH (7.8 km/hr) 2nd: 9.5 MPH (15.3 km/hr) 3rd: 20.1 MPH (32.4 km/hr)

SERVICE REFILL CAPACITY

LOCATION	CAPACITY:	Gallons	Liters
Engine (coolant)		8.50	(32)
Fuel tank (diesel fuel)		46.25	(175)
Engine oil (oil pan)		3.75	(14)
Front axle (gear oil)		5.25	(20)
Rear axle (gear oil)		5.25	(20)
Torque converter and transmission (engine oil)		5.25	(20)
Hydraulic system including tank (hydraulic oil)		26.50	(100)
Brake oil tank (engine oil)		0.50	(2)

HYDRAULIC AND STEERING SYSTEM

Steering type	Articulated frame steering	
Steering mechanism	Hydraulic power steering (Orbitrol)	
Lift (boom) cylinder	Two (2) double-acting piston type: 4 ³ / ₈ " x 25 ¹ / ₄ " (110mm x 641mm)	
Tilt (bucket) cylinder	One (1) double-acting piston type: 4 ³ / ₈ " x 18 ¹ / ₄ " (120mm x 464mm)	
Steering cylinder	Two (2) double-acting piston type: 2 ³ / ₈ " x 16" (60mm x 405mm)	
Main oil pump	Gear type: 31 GPM/1000psi @2400 RPM (117 LPM/70kg/cm ² @2400 RPM)	
Relief valve set pressure	Loading	3000 psi (210 kg/cm ²)
	Steering	2490 psi (175 kg/cm ²)
HYDRAULIC CYCLE TIME*		
Lifting time (at full load)	6.0 sec.	
Lowering time (empty)	3.0 sec.	
Bucket dumping time	1.2 sec.	
TOTAL	10.2 sec.	

* Measured in accordance with SAE J732C

AXLE SYSTEM

Drive system	4-wheel drive	
Front and rear axle	Semi-floating banjo type	
Tires	Standard	15.5 x 25-12PR (L-2)
	Optional	15.5 x 25-12PR (L-3)
		17.5 x 25-12PR (L-2) 17.5 x 25-12PR (L-3)
Reduction and differential gear	Spiral bevel/gear, 1 stage reduction, torque proportioning type	
Final reduction gear	Internal planetary gear (5.44:1) inboard mounted	
Oscillation angle	±12°/ 1'3 ³ / ₈ " (390mm)	

BRAKE SYSTEM

Service brakes	4-wheel fully hydraulic wet disc brakes with independent systems for front and rear wheels with inching system (inboard mounted)
Parking/Emergency brake	Mechanical, located on front drive shaft.

60Z^{IV-2} EQUIPMENT DATA

STANDARD EQUIPMENT

<p>Air Cleaner (Double Element Donaldson)</p> <p>Alarms (Audible): Brake Oil Level Brake Oil Pressure Engine Oil Pressure Parking Brake with T/M Engaged</p> <p>Alarms (Visual): Air Filter Battery Discharge Brake Oil Level Brake Oil Pressure Engine Oil Pressure Engine Coolant Temperature Converter Oil Temperature Parking Brake</p> <p>Alternator (24V, 40 amp) AM/FM Cassette Radio</p>	<p>Batteries: 12V-65AH (2 units)</p> <p>Brake (Parking) Mechanical Drum type</p> <p>Brakes (Service) Oil Actuation Enclosed Wet Disc Dual System</p> <p>Bucket Control Lever (Single)</p> <p>Bucket Leveler</p> <p>Boom Kickout</p> <p>Cold Start Aid</p> <p>Drawbar</p> <p>Electrical System (24 volt)</p> <p>Engine Water Expansion Tank</p> <p>Fan (Blower)</p> <p>Fenders (Front and Rear)</p> <p>Gauges: Fuel Level Hour Meter</p>	<p>Hydraulic Oil Level Speedometer</p> <p>Heater/Pressurizer (40,000 BTU)</p> <p>Hoodsides (Hinged)</p> <p>Horn (Electric)</p> <p>Indicators: High Beam Transmission Declutch Working Light</p> <p>Linkage (Z-type, Sealed)</p> <p>Lights: 4 Front 2 Rear 2 Stop/Tail 2 Backup 2 ROPS</p> <p>Muffler</p> <p>Neutral Safety Start</p> <p>Operator's Manual Box</p>	<p>Radiator: Heavy Duty Plate Fin Type</p> <p>Radiator Grille, Hinged</p> <p>Reverse Alarm</p> <p>ROPS Cab: Enclosed cab with sound suppression, front lights, front and rear wipers and washers, one rear and two side mirrors, tinted glass, and sliding side windows</p> <p>Safety Articulation Locking Bar</p> <p>Seat (Deluxe, adjustable sus- pension with headrest and adjustable armrests)</p> <p>Seat Belt, 3" wide</p> <p>Torque Proportioning Differentials</p> <p>Transmission Declutch Selector Switch</p> <p>Vandalism Protection</p>
--	---	---	---

OPTIONAL EQUIPMENT

<p>Air conditioner (with heater & defroster) (R134a refrigerant)</p> <p>Belly Guard</p> <p>Bolt-on Counterweight</p> <p>Bucket Control Lever: Dual</p> <p>Cushion Dump Valve</p> <p>Hi-Lift Arms</p>	<p>Hydraulic System three (3) spool valve, control lever, linkage & lines</p> <p>No spin differential</p> <p>Precleaner</p> <p>Quick Coupler and Attachments</p>	<p>Ride Control</p> <p>ROPS Canopy</p> <p>Seat, Air Ride</p> <p>Tires: 15.5-25-12PR (L-3), 17.5-25-12PR (L-2), 17.5-25-12PR (L-3)</p>	<p>Tire Rims — 3-Piece</p> <p>Turn Signal With Four-way Flasher</p> <p>Vandalism Cover For Operation Panel</p>
--	--	---	--